

TMS9000E

Product Guide



Features

- 90 t (110 USt) capacity
- 11,2 m - 43,4 m (36 ft - 142 ft) five-section full power boom
- Patented TWIN-LOCK™ boom pinning system
- 10 m - 17 m (33 ft - 56 ft) bi-fold lattice swingaway extension
- Optional lattice insert extensions for a 72,2 m (237 ft) maximum tip height
- Tilttable superstructure cab
- Up to 21 300 kg (48,500 lb) counterweight with hydraulic removal system

GROVE TMS9000E

The TMS9000E is the premier truck-mounted crane in the industry. Features like the Grove MEGAFORM boom, optional extensions and counterweight removal system make the TMS9000E maneuverable and strong, making an impact on any jobsite.

Features

> MEGAFORM™ boom

The Grove MEGAFORM™ boom shape eliminates weight and increases capacity compared to conventional shapes. The unique TWIN-LOCK™ boom pinning system automatically pins the sections in position using two horizontal large diameter pins. A single cylinder inside the boom reduces weight which has been used elsewhere to strengthen the machine.

> Counterweight

Up to 21 999 kg (48,500 lb) of counterweight can be power installed and removed from the superstructure cab — allowing for easy transport to and from the job site.

> Control system

Crane functions are controlled by ECOS (Electronic Crane Operating System) with CAN-BUS. The EKS5 load moment indicator provides detailed feedback and control of the crane's operating functions.

> Outriggers

Two-stage inverted jack outriggers provide three position settings – 0%, 50% and 100%.

> Power luffing extension

For improved up-and-over reach, a power luffing extension is available on the TMS9000E hydraulically offsettable from the superstructure cab, 5° to 40°.

> Suspension

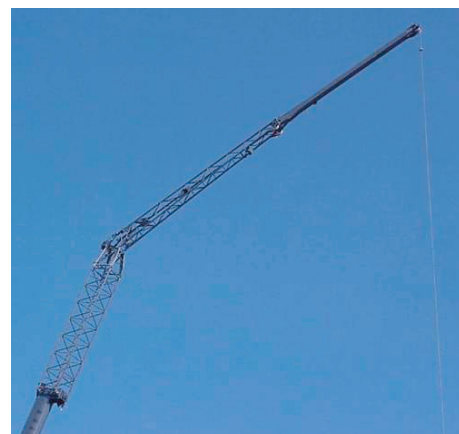
Standard front and rear air ride suspension provides a comfortable ride at 105 kph (65 mph).

CraneSTAR

> CraneSTAR is an exclusive and innovative crane asset management system

that helps improve your profitability and reduce costs by remotely monitoring critical crane data.

Visit www.cranestar.com for more information.



Job site benefits

More productive in more places on the job site

- Multiple access points on the carrier for ease of access on the crane
- Standard hydraulic tilt cab 0° - 20° for exceptional visibility and operator comfort while working with long boom, inserts, and swingaway.
- Twinlock boom pinning system helps maximize the crane's load chart capacity by eliminating weight inside the extended boom.
- Inverted outrigger jacks protect the cylinder rods from being damaged on the jobsite as well as a longer seal life.
- Standard traction control provides improved traction on the jobsite.
- Available hydraulically offsettable 33-56 ft. bi-fold 5°-40° offset capability swingaway. This option is conveniently operated inside the cab and is easily stowed and erected using hydraulics.



**CRANE
SERVICE**